



EFL803/EFL1003

Electric Counterbalanced Forklift

8-10T (96V) **LI-ION**
TECHNOLOGY

- Possible customization based on customer needs: fork holders, masts, types of hydraulic control
- Lithium technology for charging, operation and maintenance costs reduction
- Multiple charger options for maximum flexibility and cost-effectiveness
- Noise and vibration free for high operator comfort

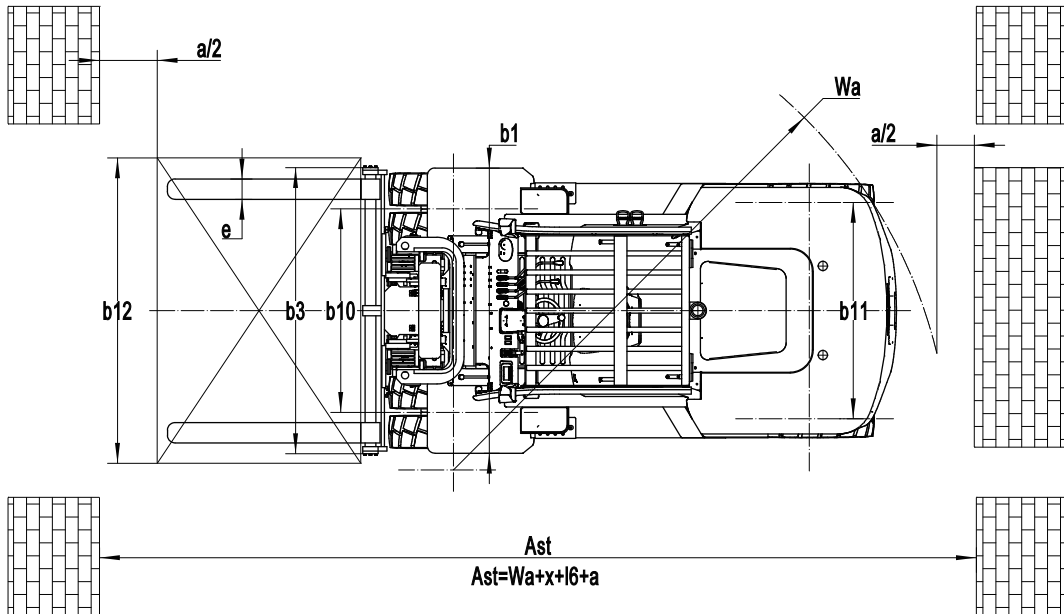
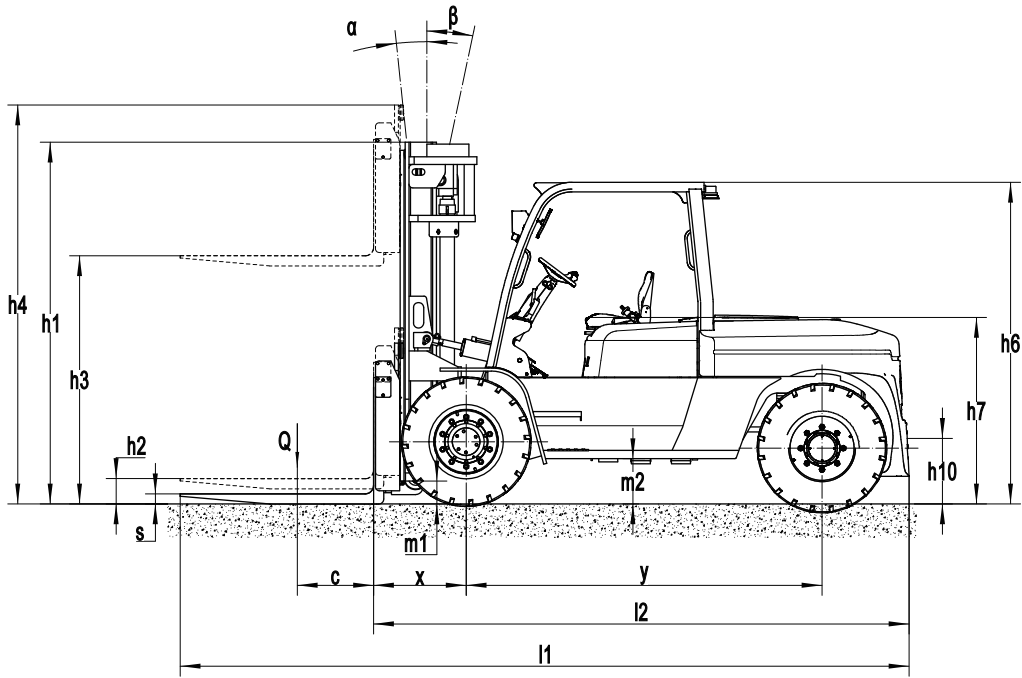
EP EQUIPMENT CO.,LTD
www.ep-equipment.com

Electric Counterbalanced Forklift 8-10T (96V)

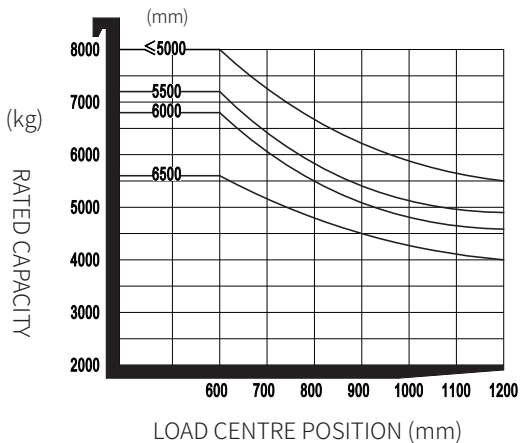
EFL803/EFL1003

Distinguishing mark	1.1	Manufacturer			EP	EP	EP
	1.2	Model designation			EFL803-6	EFL803-9	EFL1003-6
	1.3	Drive			electric	electric	electric
	1.4	Operator type			seated	seated	seated
	1.5	Load capacity	Q	kg	8000	8000	10000
	1.6	Load center distance	c	mm	600	900	600
	1.8	Load distance, centre of drive axle to fork	x	mm	708	718	713
	1.9	Wheelbase	y	mm	2500	2500	2500
	Service weight	2.1	Service weight		kg	12325	13900
2.2		Axle loading, laden front/rear		kg	18290/2035	19250/2650	21340/2560
2.3		Axle loading, unladen front/rear		kg	6105/6220	6090/7810	6090/7810
Tyres/chassis	3.1	Tyre type			pneumatic	pneumatic	pneumatic
	3.2	Tyre size, front			9.00-20-14PR	9.00-20-14PR	9.00-20-14PR
	3.3	Tyre size, rear			9.00-20-14PR	9.00-20-14PR	9.00-20-14PR
	3.5	Wheels, number front/rear (x=drive wheels)		mm	4x/ 2	4x/ 2	4x/ 2
	3.6	Tread width, front	b10	mm	1600	1600	1600
	3.7	Tread width, rear	b11	mm	1700	1700	1700
	Dimensions	4.1	Tilt of mast/fork carriage forward/backward	α/β	°	6/12	6/12
4.2		Retracted mast height	h1	mm	2850	2850	2850
4.3		Free lift	h2	mm	200	200	200
4.4		Lift height	h3	mm	3000	3000	3000
4.5		Height, mast extended	h4	mm	4310	4310	4310
4.7		Height of overhead guard (cabin)	h6	mm	2680	2680	2680
4.8		Seat height/standing height	h7	mm	1550	1550	1550
4.12		Tow coupling height	h10	mm	630	630	630
4.19		Overall length	l1	mm	5475	5785	5480
4.20		Length to face of forks	l2	mm	3955	3965	3960
4.21		Overall width	b1/b2	mm	2200	2200	2200
4.22		Fork dimensions	s/e/l	mm	75×160×1520	85×160×1820	80×160×1520
4.23		A,B Fork carriage class/type A, B			/	/	/
4.24		Fork carriage width	b3	mm	2130	2130	2130
4.31		Ground clearance, laden, below mast	m1	mm	250	250	250
4.32		Ground clearance, center of wheelbase	m2	mm	345	345	345
4.34.1		Aisle width for pallets 1000×1200 crossways	Ast	mm	6033	6343	6038
4.34.2	Aisle width for pallets 800×1200 lengthways	Ast	mm	6033	6343	6038	
4.35	Turning radius	Wa	mm	3605	3605	3605	
Performance data	5.1	Travel speed, laden/unladen		km/ h	13/15	13/15	13/15
	5.2	Lifting speed, laden/unladen		m/s	0.32/0.40	0.32/0.40	0.32/0.40
	5.3	Lowering speed, laden/unladen		m/s	0.46/0.4	0.46/0.4	0.46/0.4
	5.5	Drawbar pull, laden/unladen		N	/	/	/
	5.6	Max. drawbar pull, laden/unladen		N	/	/	/
	5.8	Max. gradeability, laden/unladen		%	13/16	13/16	13/16
	5.10	Service brake			Hydraulic	Hydraulic	Hydraulic
	5.11	Parking brake			Mechanical	Mechanical	Mechanical
Electric-engine	6.1	Drive motor rating S2 60 min		kW	35	35	35
	6.2	Lift motor rating at S3 15%		kW	2x30	2x30	2x30
	6.4	Battery voltage/nominal capacity		V/Ah	96V/920AH	96V/920AH	96V/920AH
	6.5	Battery weight		kg	860	860	860
Addition data	8.1	Type of drive control			AC	AC	AC
	10.5	Steering design			Hydraulic	Hydraulic	Hydraulic
	10.7	Sound pressure level at the driver's ear		dB(A)	/	/	/

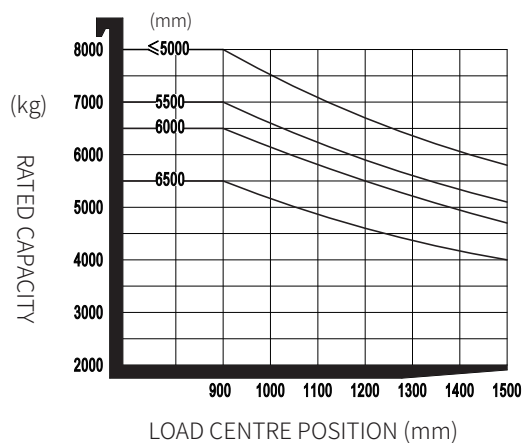
If there are improvements of technical parameters or configurations, no further notice will be given.
The diagram shown may contain non-standard configurations.

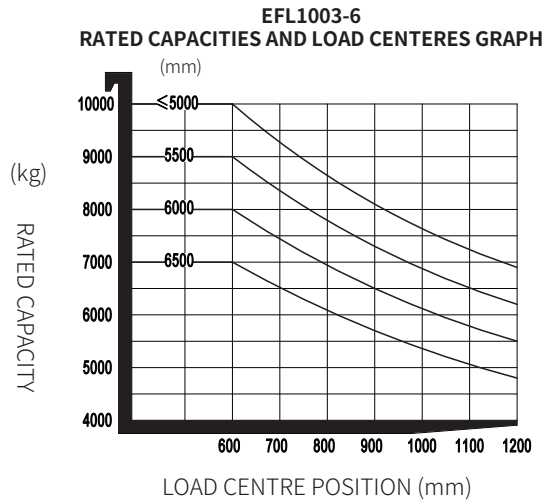


EFL803-6
RATED CAPACITIES AND LOAD CENTERS GRAPH



EFL803-9
RATED CAPACITIES AND LOAD CENTERS GRAPH





Option

No.	Optional items	EFL803/EFL1003
1.1	Mast types	●2-Standard Mast○2-Free Mast○3-Free Mast
1.2	Mast height extended	●3m○3.5m○4m○4.5m○5m○5.5m○7m○Other customized heights
1.3	Fork and attachment	●1520mm standard fork○Other length forks○Customization of non-standard accessories
1.4	Fork carriage	●Standard fork carriage○Widen fork frame (width can be customized)
1.5	Fork adjustment type	●Hydraulic distance adjustment fork○Side shift distance adjustment fork○Integral side shifter
2.1	Li-ion battery	●96V 920Ah lithium iron phosphate battery
2.2	Charger	●No○2x 96V 201A
3.1	Load wheel material	●pneumatic○solid
3.2	Overhead guard/cabin	●standard overhead guard○cabin with air conditioner
3.3	Hydraulic control	●Electric proportional control
4.1	Reversing warning	●Reverse hummer○Reverse voice horn
4.2	Reversing radar and reversing image	●No○Reversing radar○Reversing image○Reversing radar and reversing image
4.3	Mast work light	●No○Mast work lights *2
4.4	Warning light	●Strobe warning light○Rotating warning light○Rotating hummer warning light
4.5	Blue light	●No○Rear blue light○Left and right blue light○Rear, left and right blue light
4.6	Fog lamp	●No○Front fog lamp
5.1	Cigarette lighter interface	●No○Cigarette lighter interface (12V)
5.2	USB charger interface	●No○USB charger interface (5V)
5.3	Fire extinguisher	●None○Dry powder fire extinguisher (0.5kg)○Dry powder fire extinguisher (2kg)
6.1	Turn speed limit	●None○Equipped with turning speed limit
6.2	Vehicle speed alarm	●None○Overspeed alarm (vehicle speed can be set)
6.3	OPS	●Travel and hydraulic OPS
6.4	Mast buffer	●Upper and lower buffering
6.5	Password or card swipe to activate	●Card swipe to activate

Note: ●Standard ○ Optional - Inconformity